



NORTHSIDE STUDY GROUP

Northside Study Group:

Northwest Trail
Planning Study

August 2, 2021

beltline.org



@atlantabeltline



@atlantabeltline



@atlantabeltline





TONIGHT'S ON + OFF CAMERA TEAM

Meeting Host



Whitney Fuller
Community
Engagement
Manager, ABI

Presenter



Shaun Green, PE
Senior
Transportation
Engineer, ABI

Presenter



Greta deMayo
Executive Director,
PATH Foundation

Expert Voice



Pete Pelligrini
Project Manager,
PATH Foundation

Expert Voice



Beth McMillan
VP, Community
Planning,
Engagement, Art, ABI

Meeting Support



Rashida Williamson
Project Assistant,
ABI

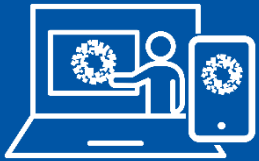
Meeting Support



Nathan Soldat
Community
Engagement
Manager, ABI



VIRTUAL MEETING FORMAT



- Your line is muted, and you won't be able to share your video or screen during the meeting.
- A recording of this meeting, the presentation, a copy of tonight's Q&A and all other supporting materials will be made available online at www.beltline.org/meetings.
- If you are having technical difficulties during the meeting, please email engage@atlbeltline.org.



POLL QUESTIONS

Poll Question #1

What neighborhood do you live in?

- Ansley Park | Sherwood Forest
- Berkeley Park } Channing Valley
- Ardmore } Brookwood Hills { Colonial Homes
- Lindbergh/Morosgo | Lindridge/Martin Manor
- Collier Hills | Collier Hills North
- Blandtown | Loring Heights
- Peachtree Heights | Peachtree Hills
- Underwood Hills | Atlantic Station
- Another Neighborhood Within the City of Atlanta
- Another Neighborhood Outside of the City of Atlanta



POLL QUESTIONS

Poll Question #2

Did you attend the last public meeting for the Northwest Trial Study in May?

- Yes
- No



POLL QUESTIONS

Poll Question #3

How do you feel about the BeltLine coming to the Northside of Atlanta?

- Thrilled
- Happy
- No Opinion
- Apprehensive
- Upset



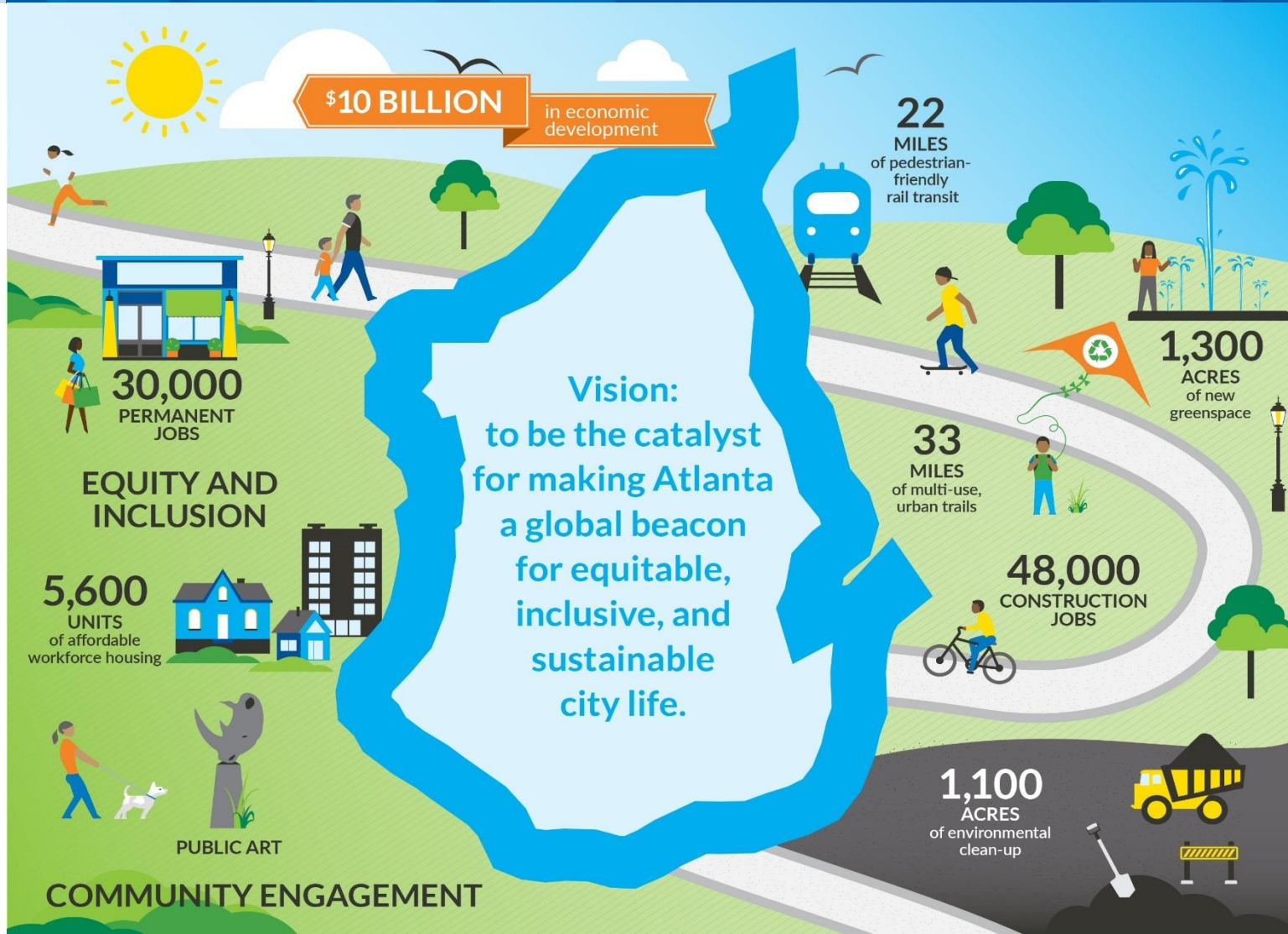
POLL QUESTIONS

Poll Question #4

How would you rate your knowledge of the BeltLine's full portfolio of projects?

- I'm an expert
- I know more than most people
- I don't know a lot, but I want to learn more
- I don't know anything about the BeltLine

ATLANTA BELTLINE VISION



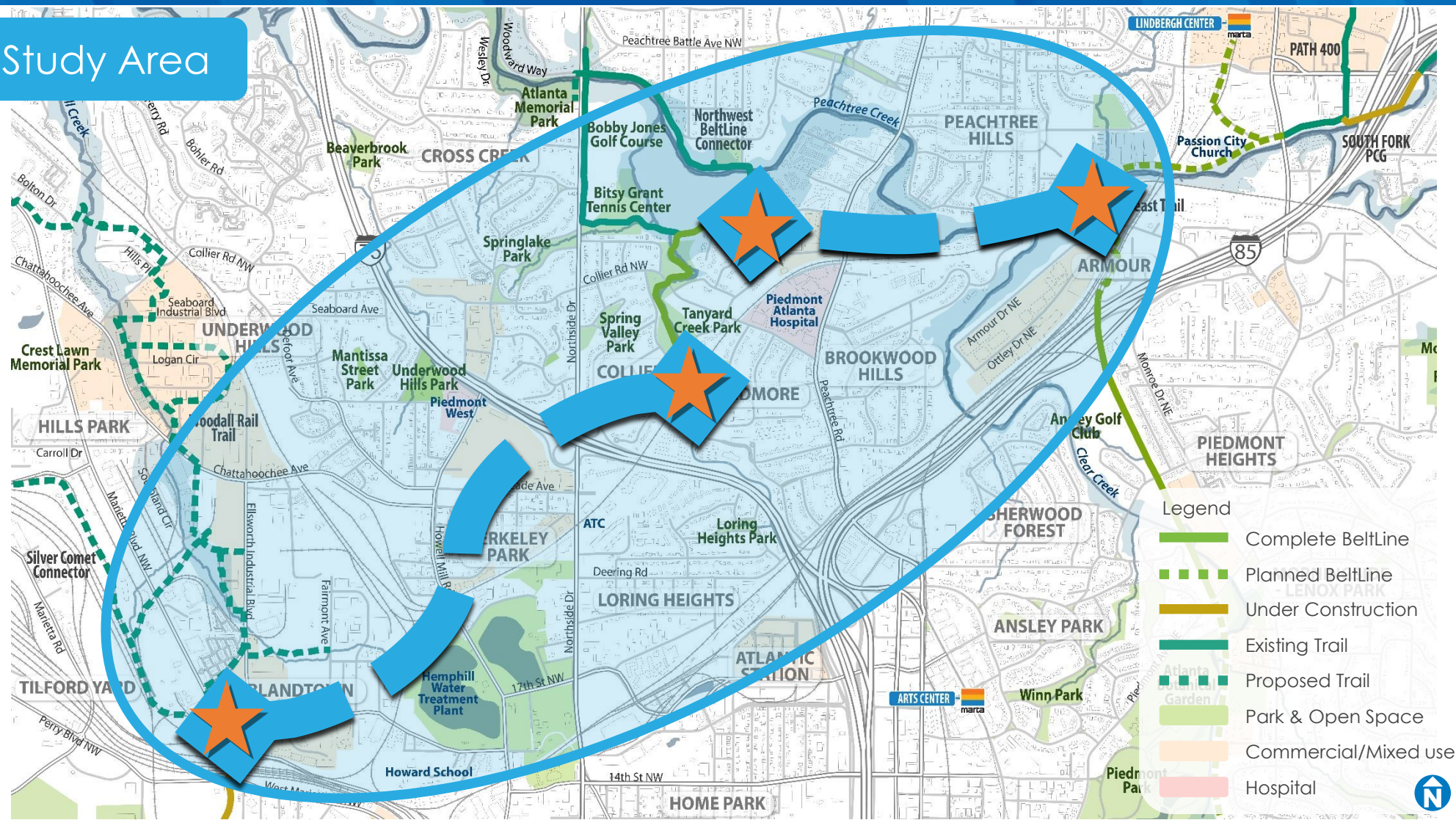


A QUICK REFRESHER...

Study Area

Challenges:

- Railroad
- Freeway
- Arterial
- Terrain
- ROW





PUBLIC INPUT FROM MAY

Desired Destinations collected were:

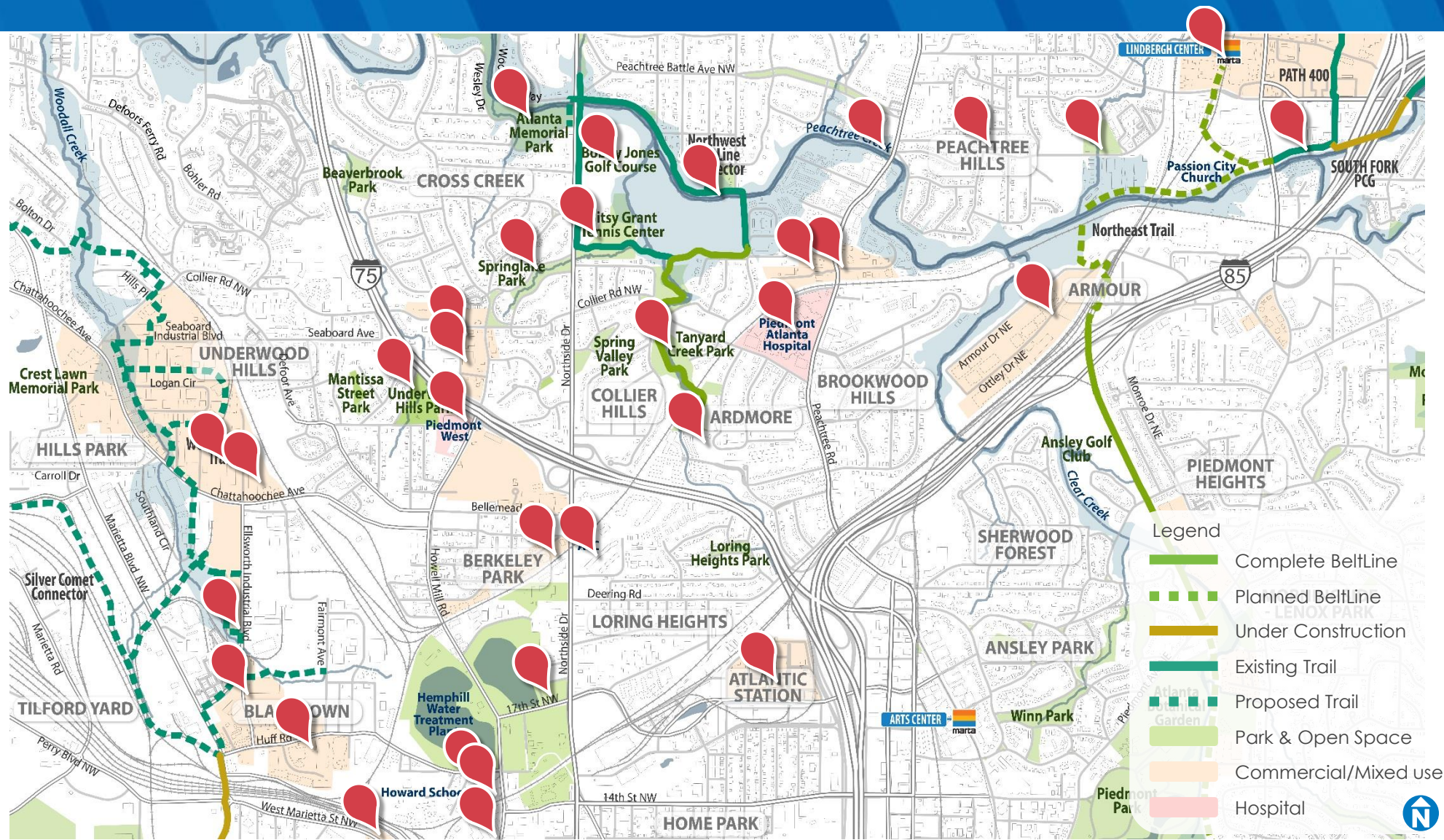
The Works	MARTA Stations	Bobby Jones
Westside Provisions District	Bitsy Grant	Underwood Hills Park
Westside Park	Waterworks Park	King Plow
Bold Monk	Taqueria del Sol	Howell Mill restaurant
Atlantic Station	Northside Tavern	Piedmont West
Silver Comet Trail	Atlanta Memorial Park	W. Marietta St. NW
PATH 400	Tanyard Creek Park	
Peachtree Hills Park	Georgia Tech	

Living
Working
Shopping
Recreating
Exercising
Schooling
...



IDENTIFIED DESIRED DESTINATIONS

Living
Working
Shopping
Recreating
Exercising
Schooling
...



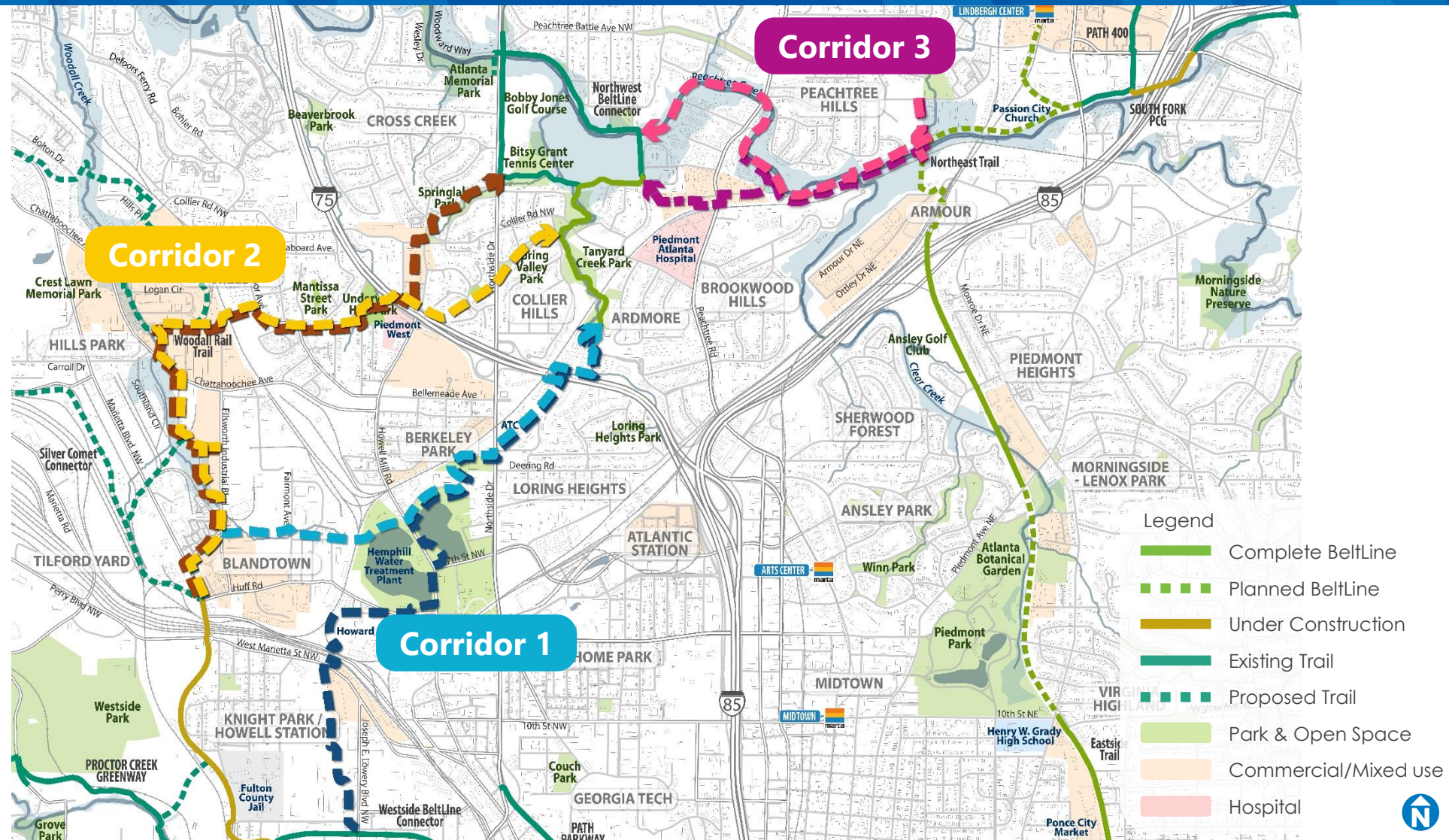


FEASIBILITY STUDY CRITERIA

Feasibility Criteria	Weight Level
Trail User Experience	High ↓ Low
Safe Connection	
Connection to Desired Destinations and Population	
Constructability	
Stakeholder / Property Owner support	
Cost	
Time of Completion	



NW BELTLINE TRAIL STUDY CORRIDORS





COORDINATION WITH KEY STAKEHOLDERS

Department of
Watershed
Management

Department of
Parks & Rec

Solid Waste
Management

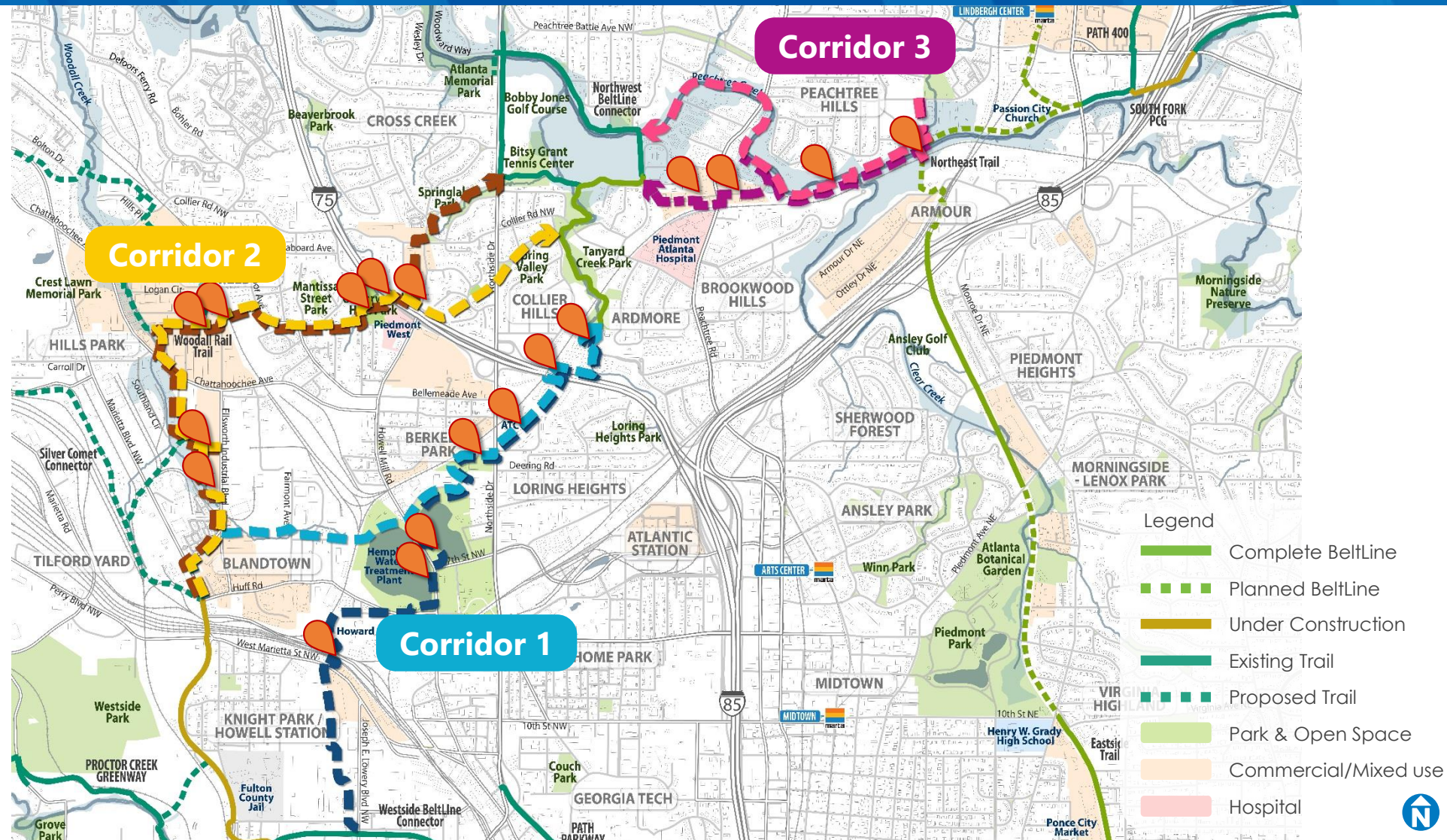
Georgia Tech

Railroads

GDOT

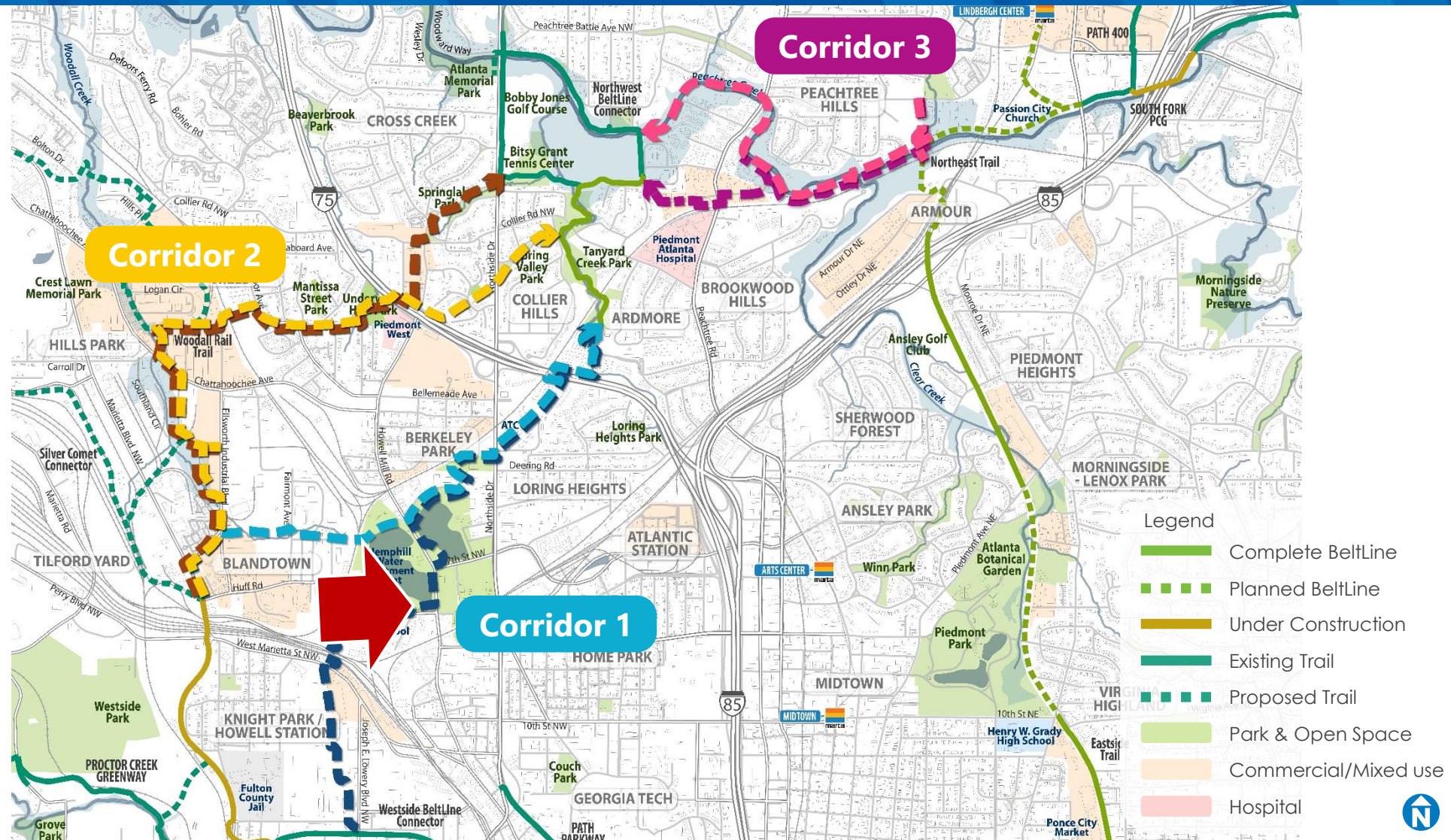
ATLDOT

Key Property
Owners





CORRIDOR #1 VISION





Huff Rd

SE corner of Water
Treatment Plant

Existing





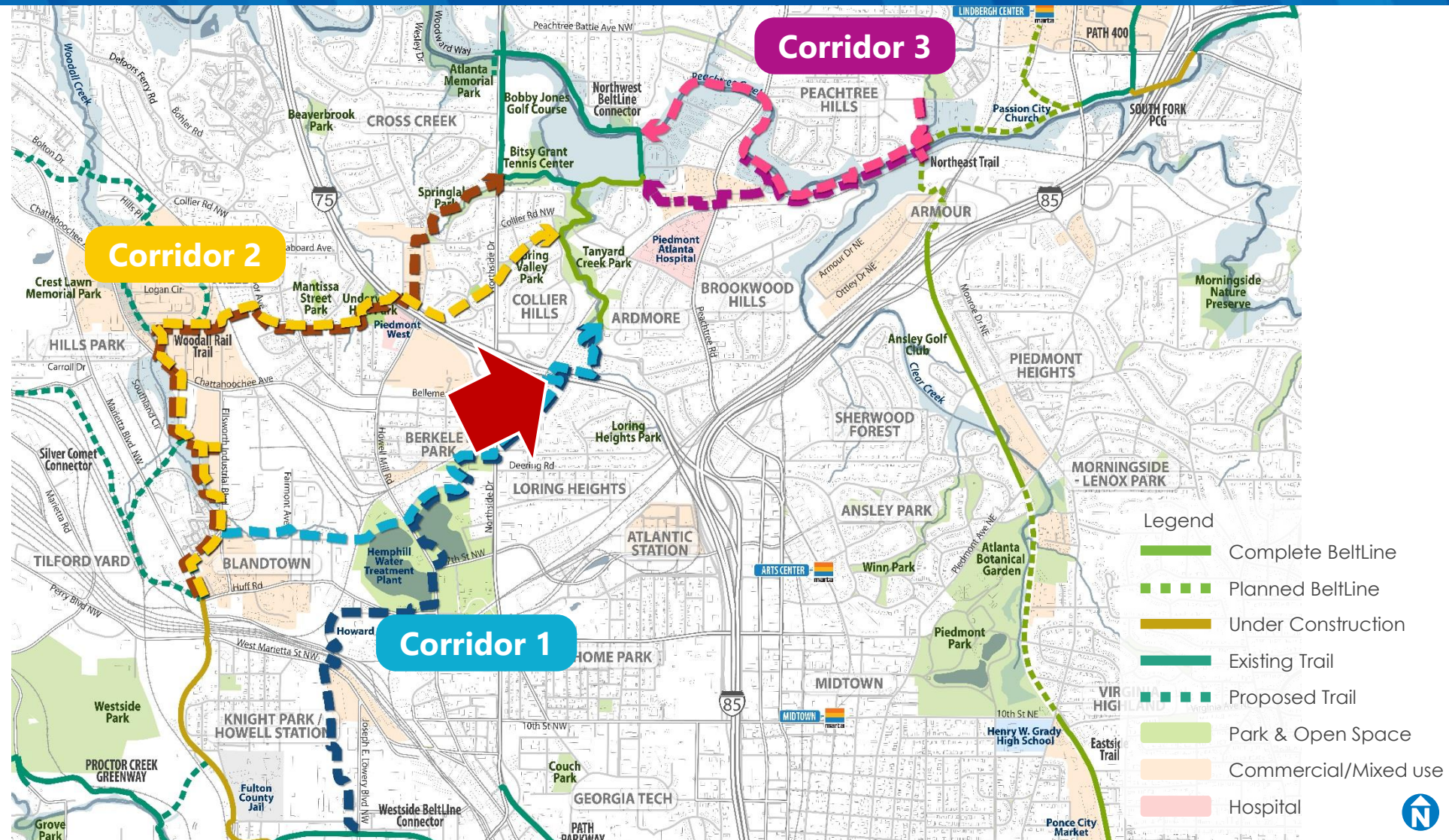
SE corner of Water
Treatment Plant

Proposed





CORRIDOR #1 VISION





I-75

CSX

I-75 near ATC

Existing



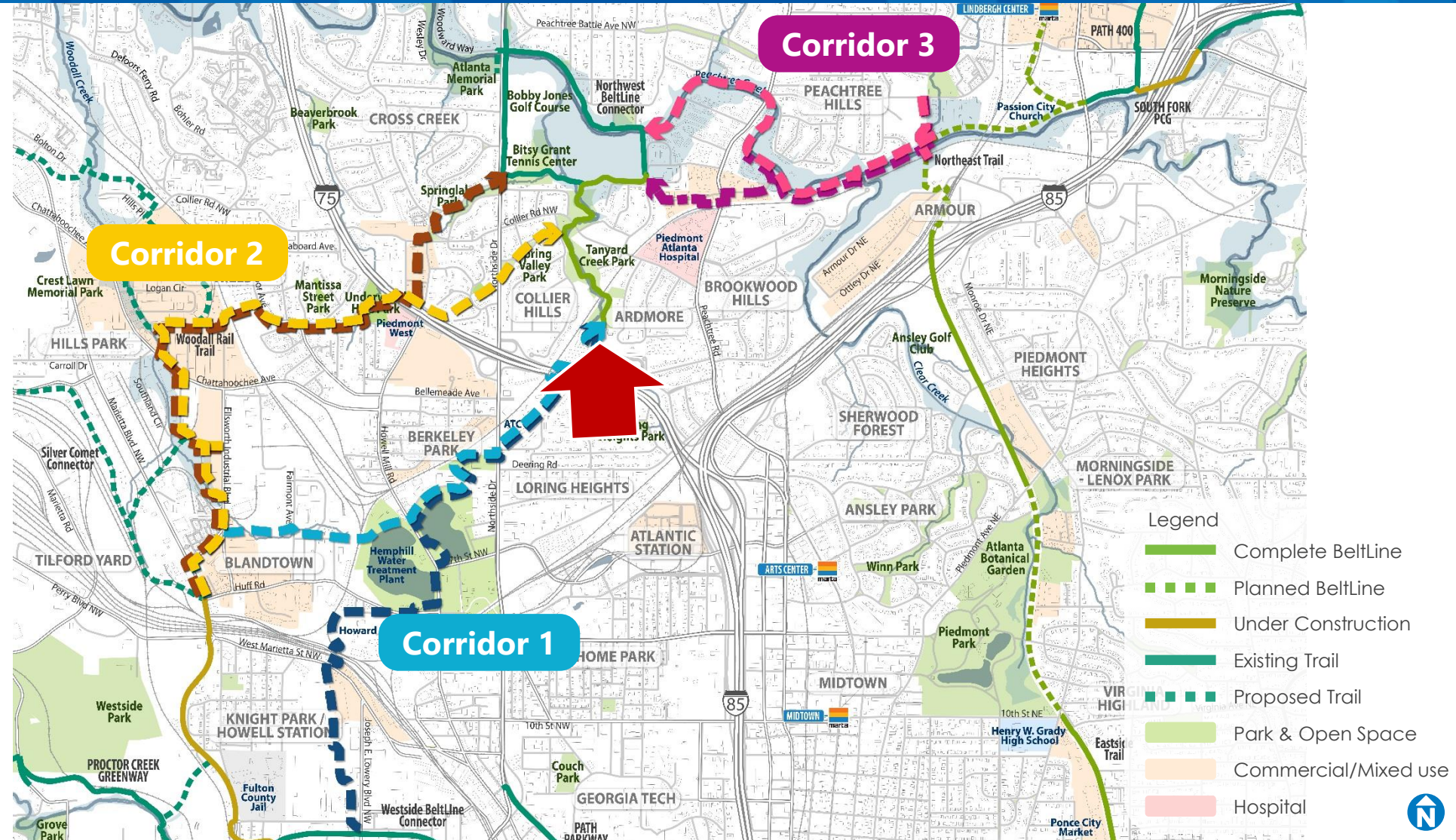


I-75 near ATC

Proposed



CORRIDOR #1 VISION





Channelized Creek
leading to Tanyard
Creek Greenway

Existing





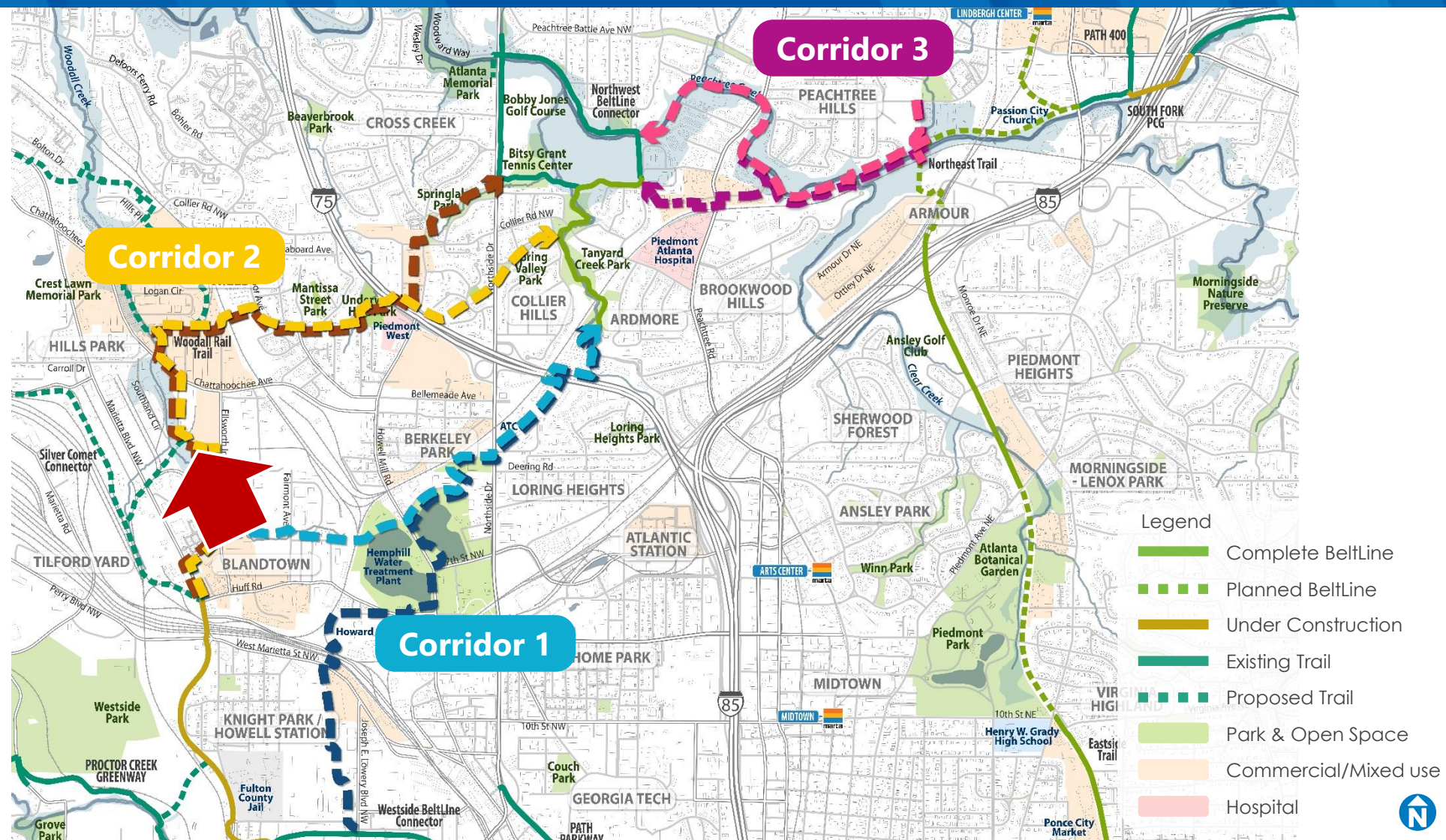
Channelized Creek
leading to Tanyard
Creek Greenway

Proposed





CORRIDOR #2 VISION





Retention Pond
near Topgolf

Existing





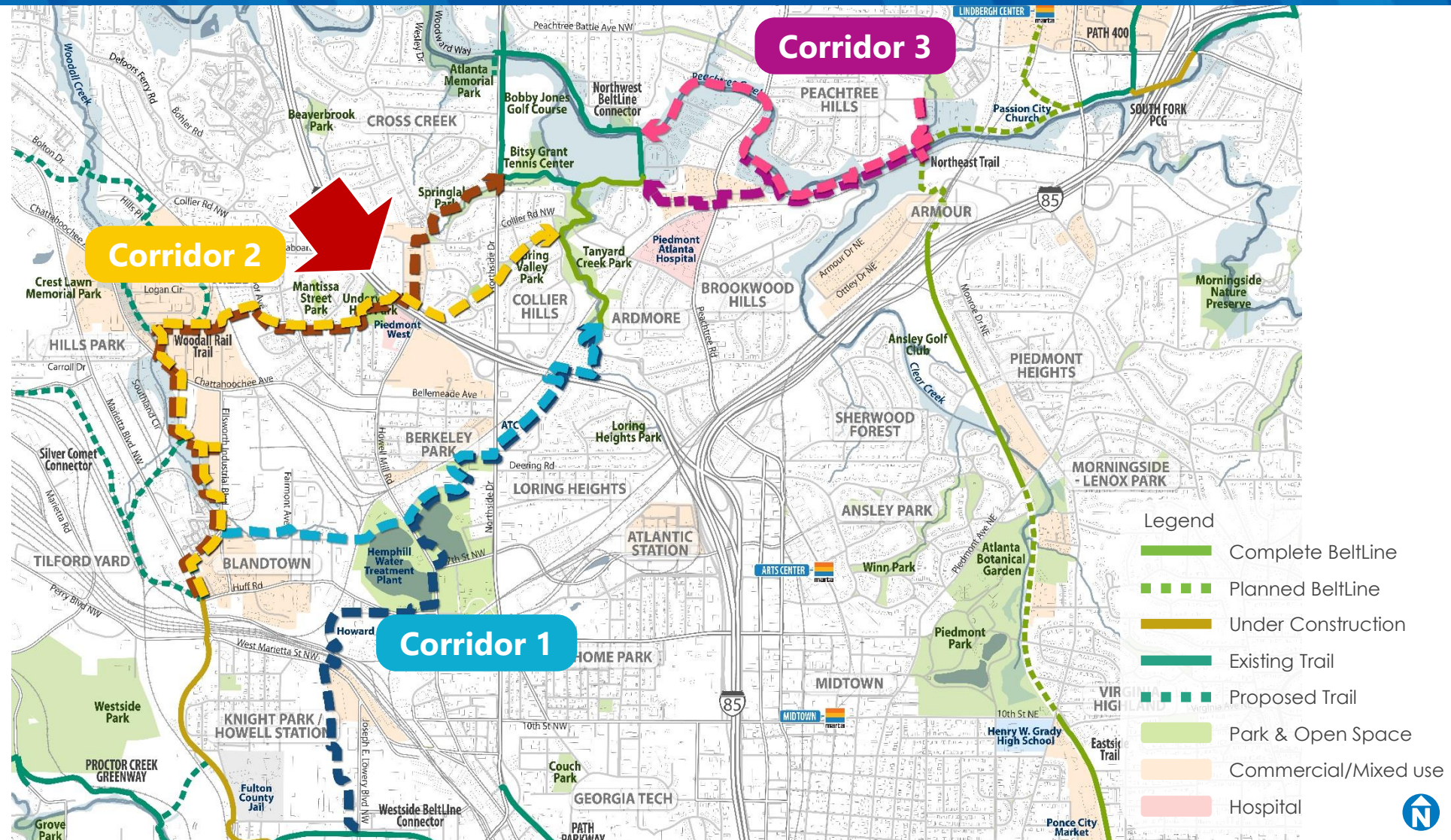
Retention Pond
near Topgolf

Proposed





CORRIDOR #2 VISION





I-85 near
Underwood Hills
Park

Existing



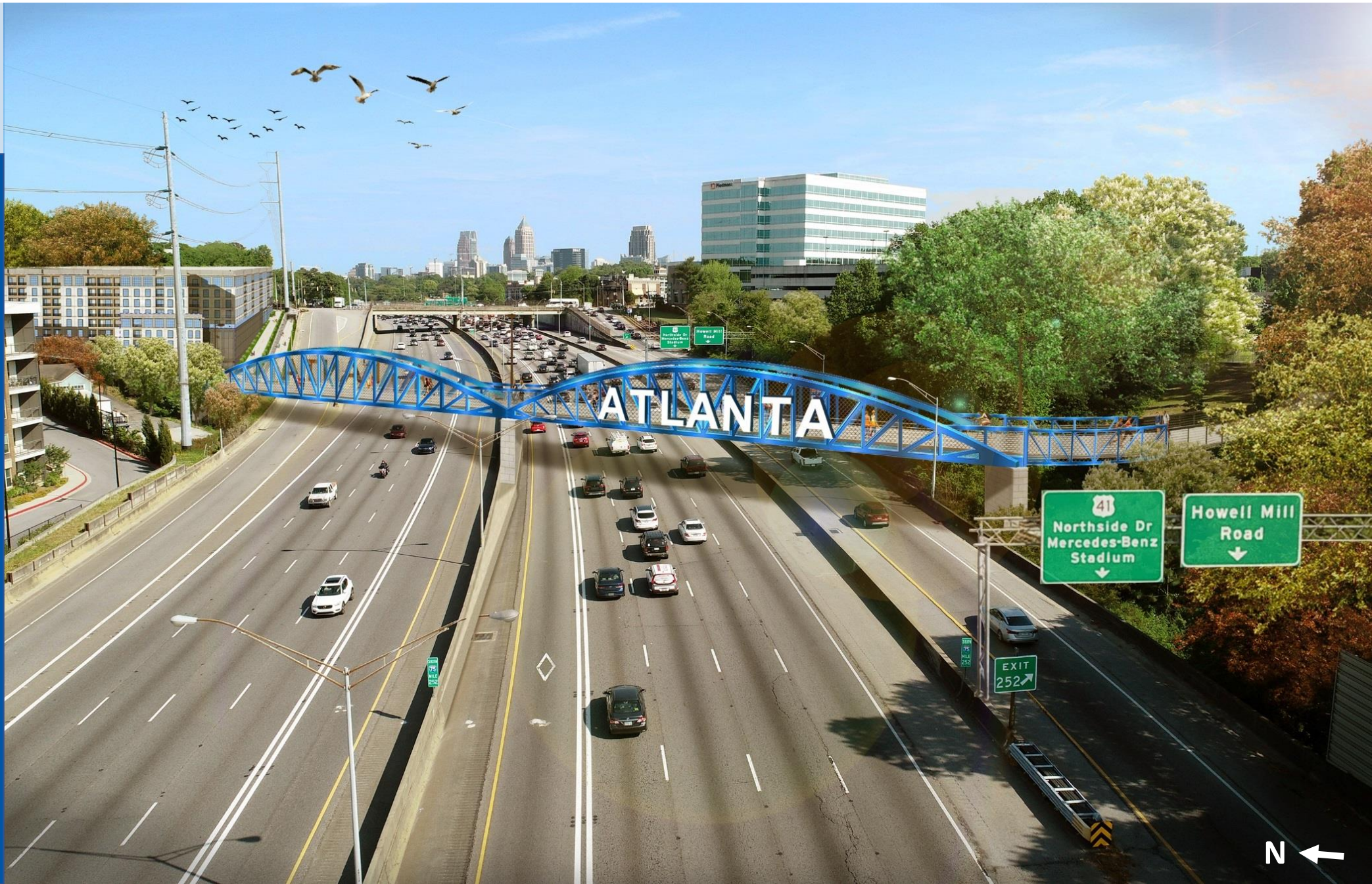
Underwood
Hills Park





I-85 near
Underwood Hills
Park

Proposed





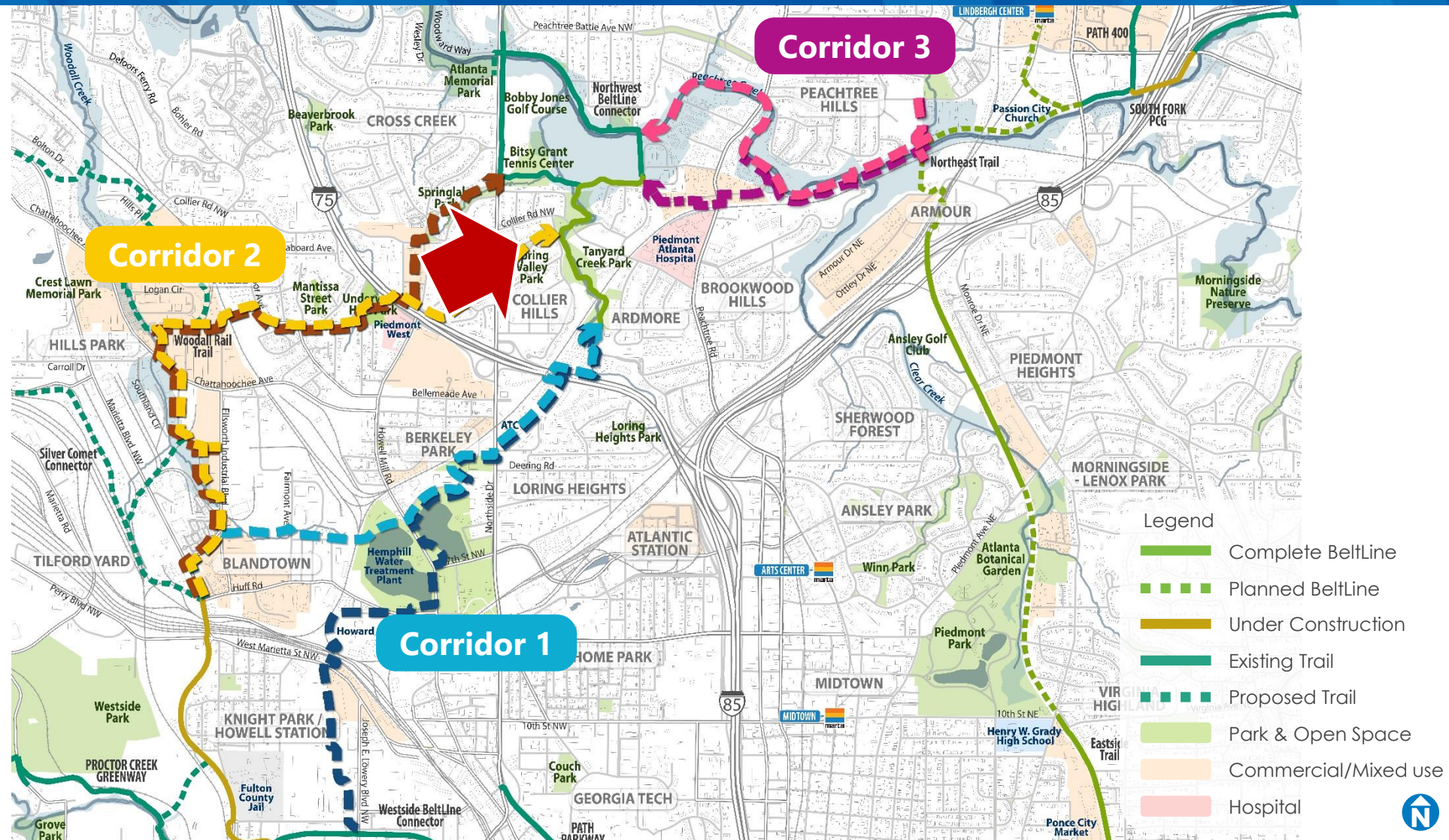
I-85 near
Underwood Hills
Park

Proposed





CORRIDOR #2 VISION





Spring
Valley Rd

Spring
Valley Park

Meredith Dr

N
↙

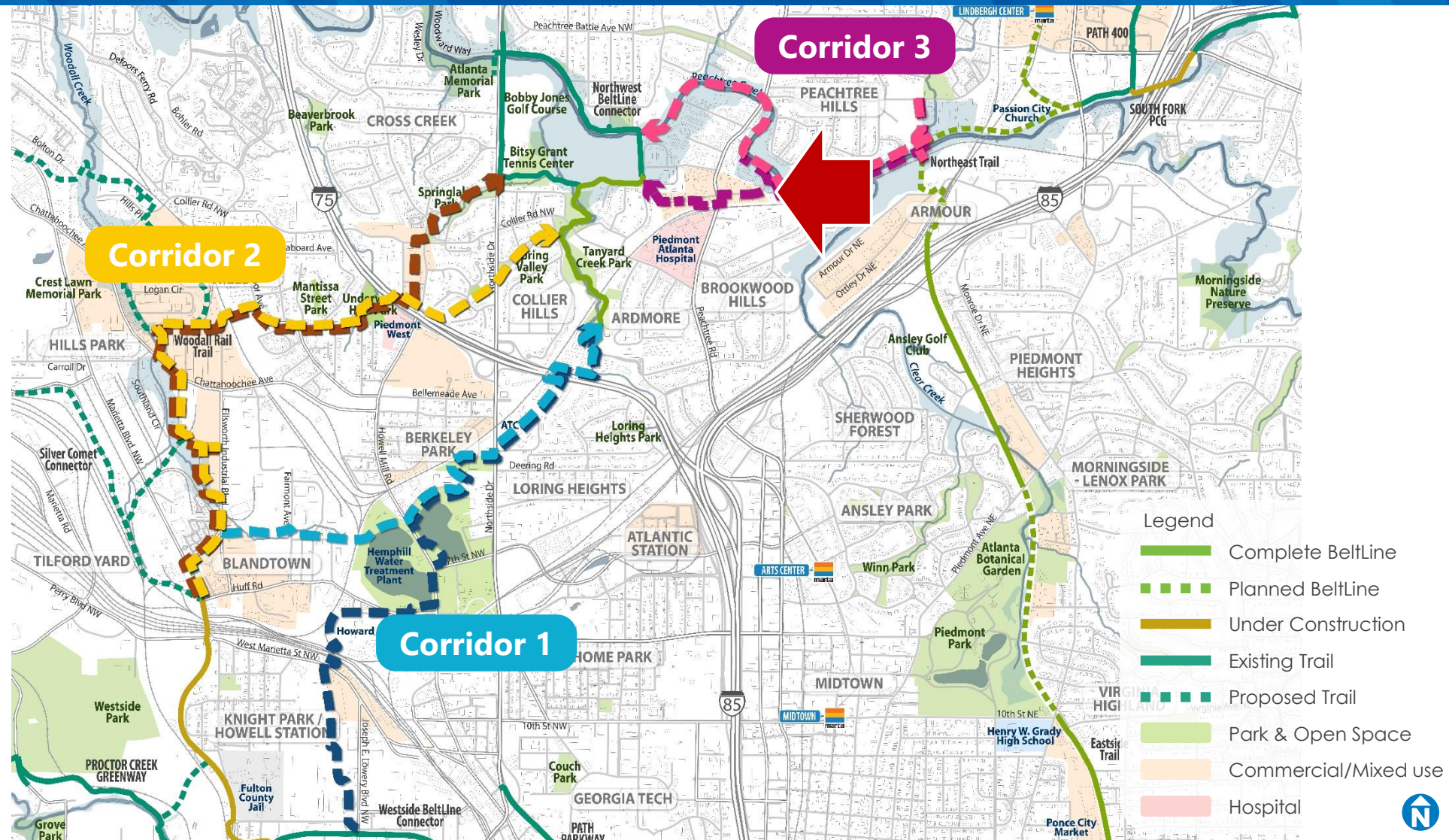
Spring Valley Park
Existing



Spring Valley Park
Proposed



CORRIDOR #3 VISION





Peachtree Creek

Peachtree Park Apt
Existing

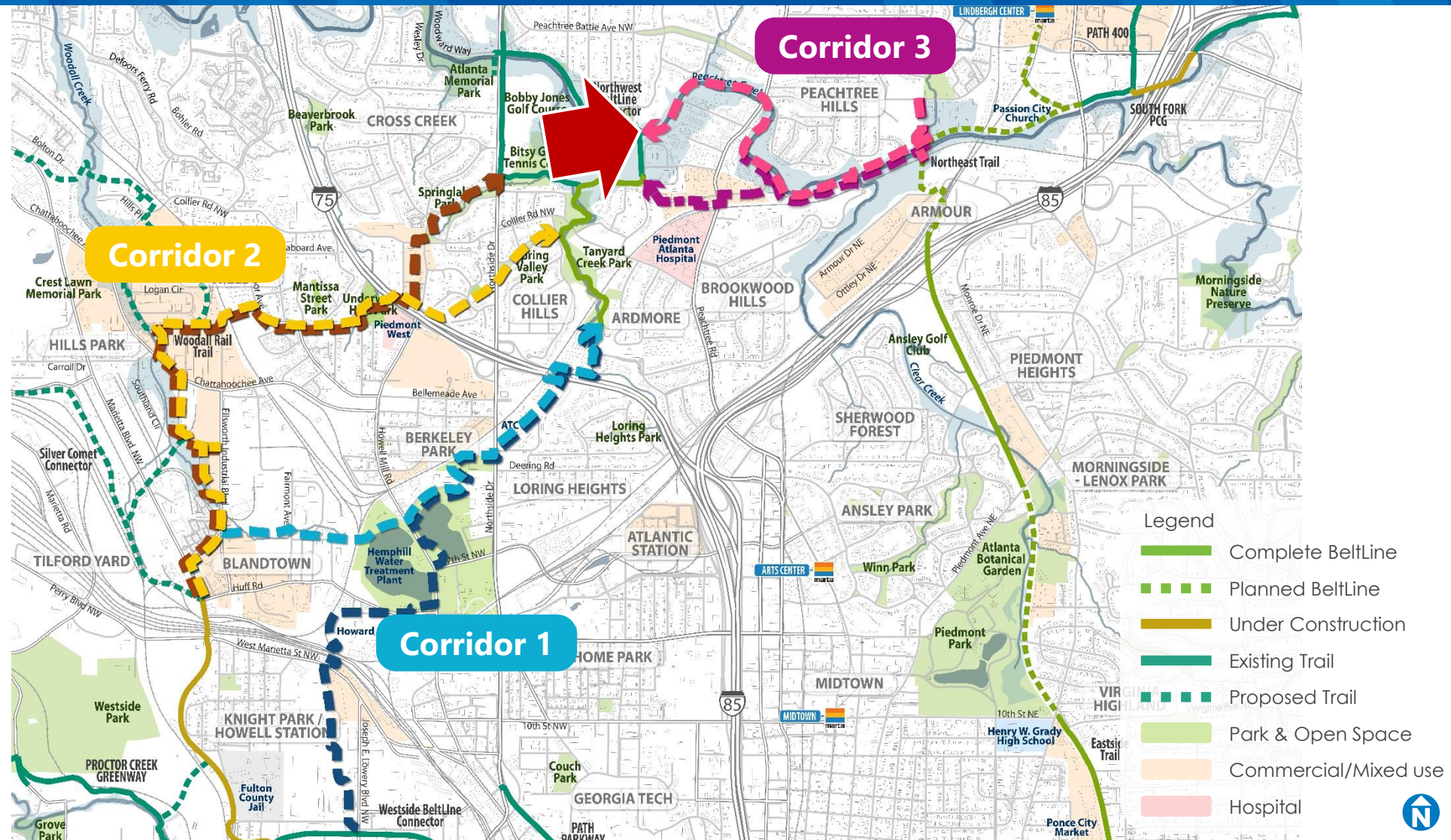
→ N



Peachtree Park Apt
Proposed



CORRIDOR #3 VISION





Bridge at Bobby
Jones Golf Course

Existing





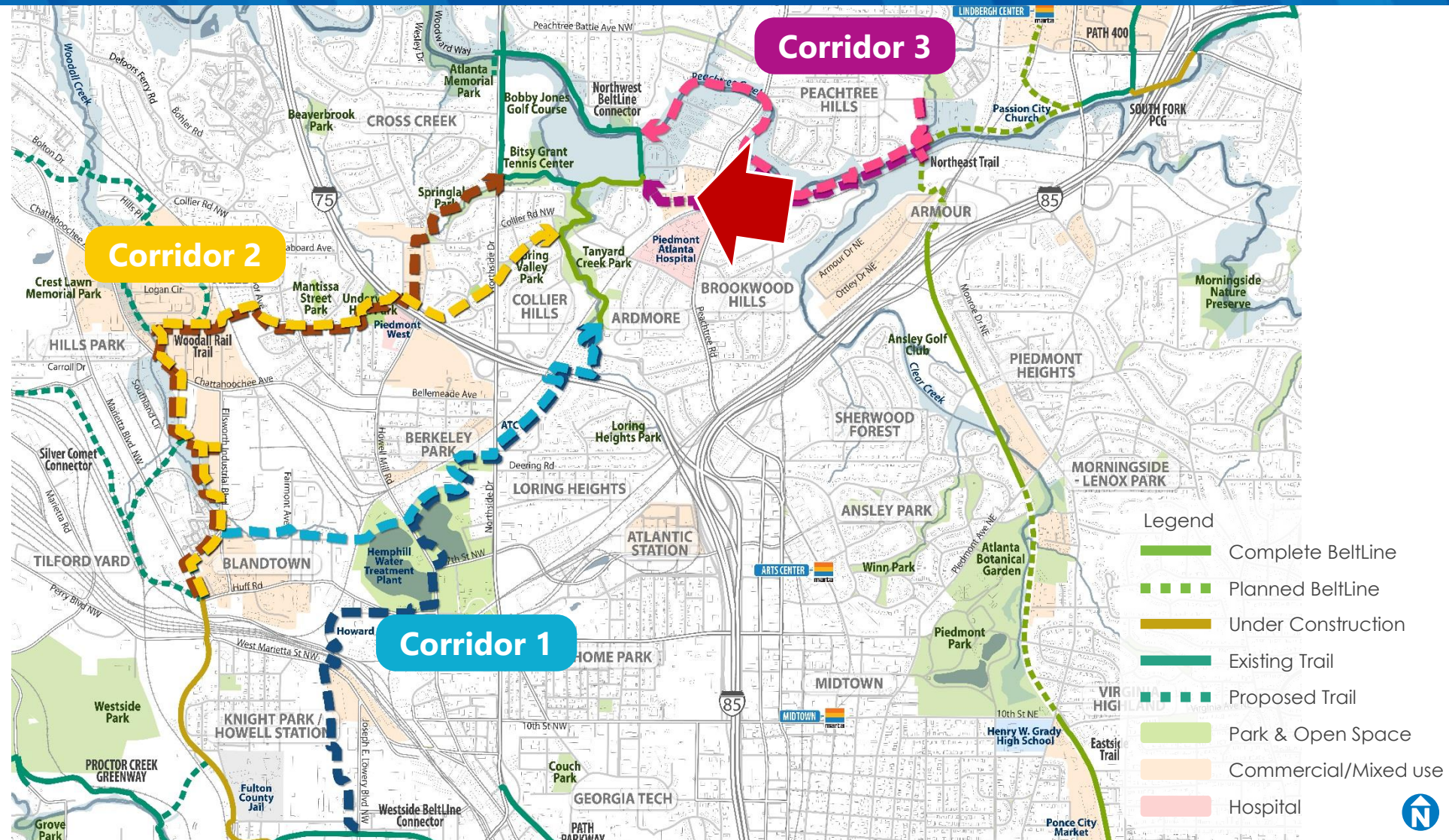
Bridge at Bobby
Jones Golf Course

Proposed





CORRIDOR #3 VISION





Georgia Power
substation

Bennett St

Bennett Street

Existing





Bennett Street

Proposed



WHAT'S NEXT

Project Tasks	April	May	June	July	Aug	Sep	Oct
Project Meetings (biweekly on 1 st and 3 rd Tuesday)	M	M F	M F	M M	M M	M M	M M
Trail Study Development	S	S	S	S	S	S	
Public Engagement		P1	We are here!			P2	P3
Implementation Strategy, Cost Estimate, Timeline							
Finalize Trail Study							
Acquisition (on-going through July 2022)							

Meeting Legend:

M PATH/ABI Project Meeting

S Stakeholder Meeting

F PATH/ABI Field Meeting

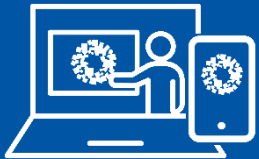
P Public Meeting

Task

Project meetings and public involvement (anticipated meeting schedule as noted above)



VIRTUAL MEETING Q&A



Phone Attendees

- Press *9 on telephone keypad to “raise your hand” during the Q&A to indicate you want to speak. Facilitator will unmute your mic.

Online Attendees:

- Submit a question or comment any time in Q&A box.
- The “raise your hand” feature is available to all Zoom participants however we are prioritizing phone attendees.

Facebook Live Attendees:

- Please feel free to participate in the “Comments Section.” Someone on our staff will make sure I see your questions.



CONTACT INFORMATION

Community Engagement Manager:

Whitney Fuller: wfuller@atlbeltline.org

Senior Transportation Engineer:

Shaun Green: sgreen@atlbeltline.org

VP Planning Community Engagement:

Beth McMillan: 404-477-3550, bmcmillan@atlbeltline.org

For more information on the project:

beltline.org/westside-trail-extension



JOB OPPS: GROW ON THE BELTLINE

STRIVE Atlanta:

- STRIVE's proven five-pillar model (job readiness training, occupational skills training, career coaching/case management, job placement, and lifetime support) creates a clear pathway to long-term career success. The partnership will provide residents with skills they need to secure family-sustaining jobs.
- Currently recruiting for 7-week free training class in the logistics industry which begins August 30.
- Virtual information sessions taking place every Thursday at 10am, July 29 through August 26. Orientation begins August 27.
- For more information visit: Strive.org/atlprograms

Visit beltline.org/workforce-partnerships or call 404-446-4404





POLL QUESTION?

Poll Question #5

How did you hear about this meeting?

- Communication directly from Atlanta BeltLine, Inc.
- Communication from a family member, friend or neighbor
- Social Media



POLL QUESTION?

Poll Question #6

What is your preferred method or methods of communication?

- Email
- Social Media
- Automated Phone Call
- Text Message
- US Postal Mailing



POLL QUESTION?

Poll Question #7

Was this meeting helpful?

- Yes
- No
- No Opinion



THANK YOU!

