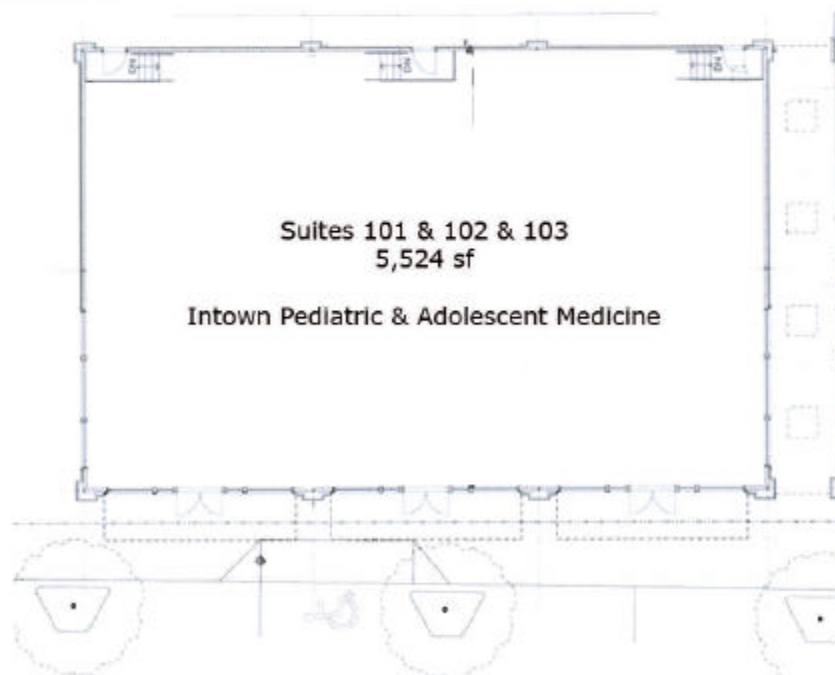


# **GLENWOOD PARK TOWN CENTER**

*Building #15-A*

*490 Bill Kennedy Way*



**For Further Information Contact:**

**Ann Mijanovich**  
**The Meddin Company**  
Ph: 404.872.2828 ext. 6  
E:mail: [ann@meddin.com](mailto:ann@meddin.com)